

Fonts on the Mac

Management and Font types

1

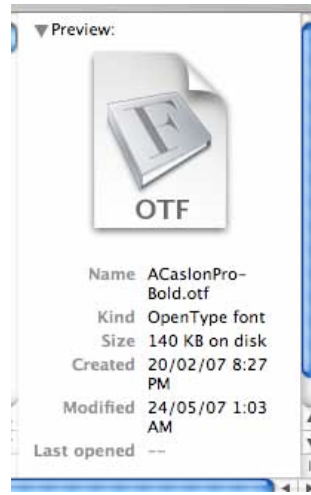
Fonts & Mac OSX

- * City named fonts are for the OS to use and should never be used in our designs.
- * There are many more issues with fonts that we, as Graphic Designers must learn to deal with.
- * In this lesson we will cover some of the do's and don'ts of using fonts on the Mac.

2

Kinds of Fonts-OpenType

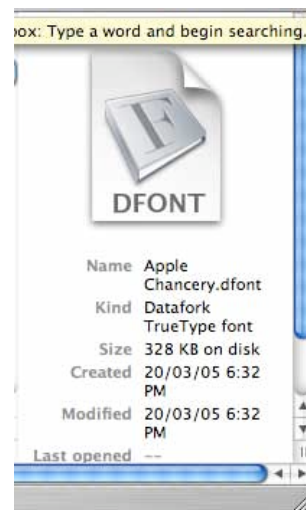
- * note file extension .otf
- * OpenType are a self contained font file
- * It has both the screen and postscript files embedded in one file
- * many come preloaded with your Mac do not remove these from your admin level font folder.
- * Can be used in print production, make sure you confirm with your service provider that they can handle OpenType fonts



3

Kinds of Fonts-dfonts

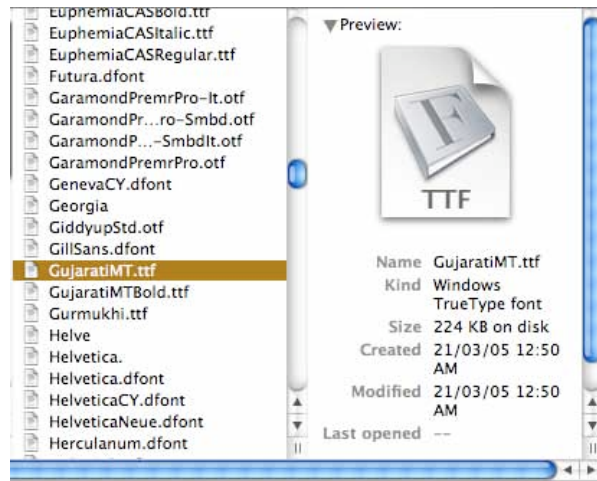
- * note file extension .dfont
- * dfonts are also self contained fonts
- * you have several very common fonts preloaded on your Mac; such as Helvetica
- * again do not remove or delete these from your admin level font folder
- * note under "kind" it says Datafork TrueType font this indicates it is self contained and is also used by the OSX



4

Kinds of Fonts-Windows Truetype

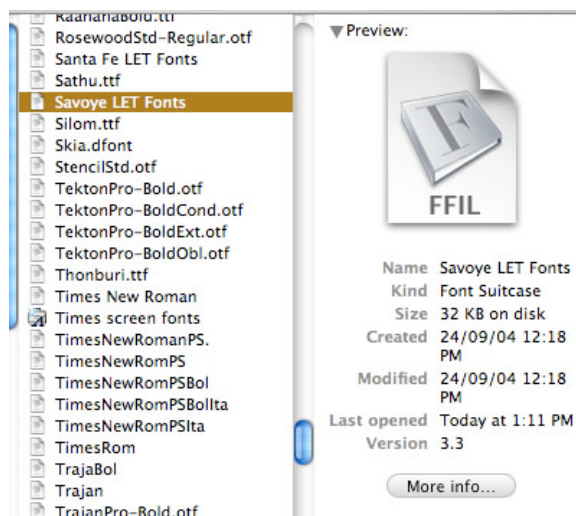
- * note file extension .ttf
- * you have several very common fonts preloaded on your Mac; most are used with the OSX
- * again do not remove or delete these from your admin level font folder
- * note under "kind" you see that it is a Windows TrueType font



5

Kinds of Fonts-Windows Truetype

- * note file extension .LET but font file type is FFIL
- * these come loaded on your Mac—they are a Apple manufactured font
- * again do not remove or delete these from your admin level font folder
- * a self contained font



6

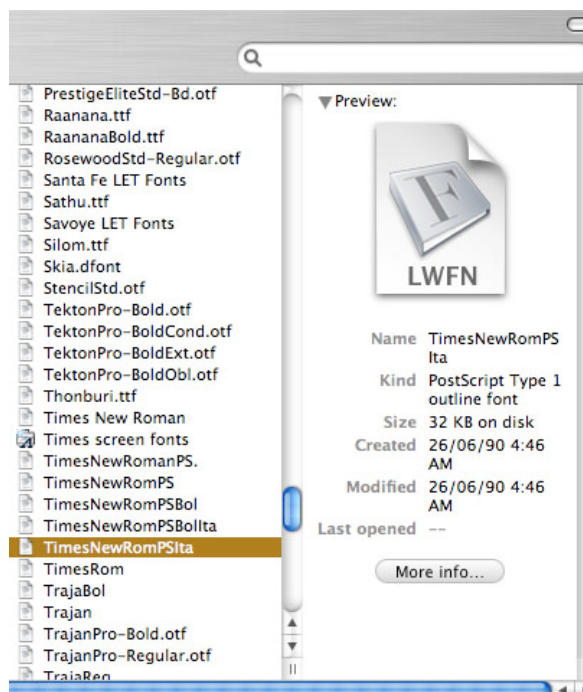
Kinds of Fonts

- * the previous kinds of fonts are found in your admin level of font storage, so they come preloaded on your Mac from the Apple
- * the next few font types are ones we find, buy or download and use for web or print production

7

Kinds of Fonts-PostScript Type 1

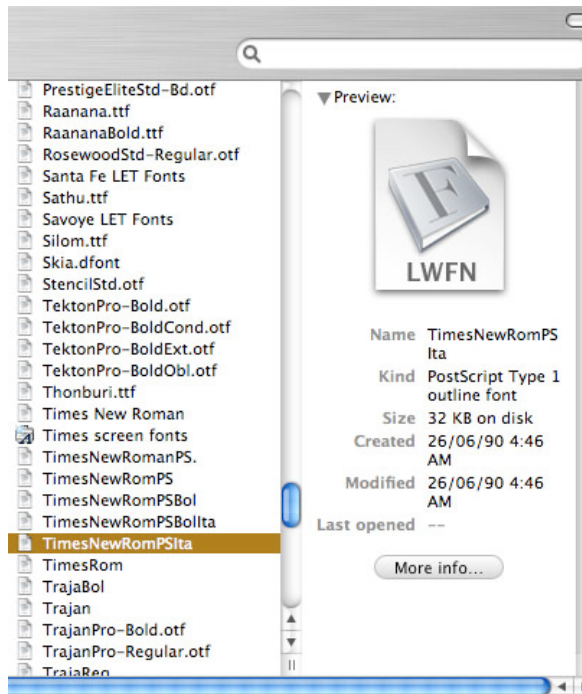
- * this is a PostScript font which contains two parts—screen/bitmap file & PostScript/outline file—both are required for print production
- * before the OpenType was perfected this was the most common font type for print production
- * known as PostScript Type 1 fonts



8

Kinds of Fonts-PostScript Type 1

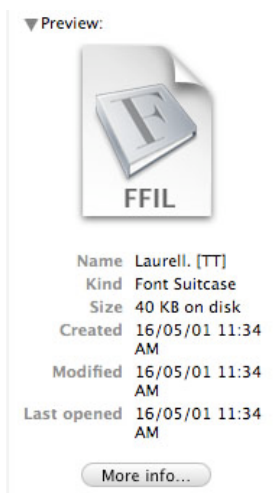
- * note the file extension is .PS but the file type is LWFN
- * notice in the first column you see 8 files named Times New Roman
- * one is the font suitcase which holds the screen font files & postscript files of each style
- * you must have a file for each STYLE of a typeface that you wish to use



9

Kinds of Fonts-TrueType

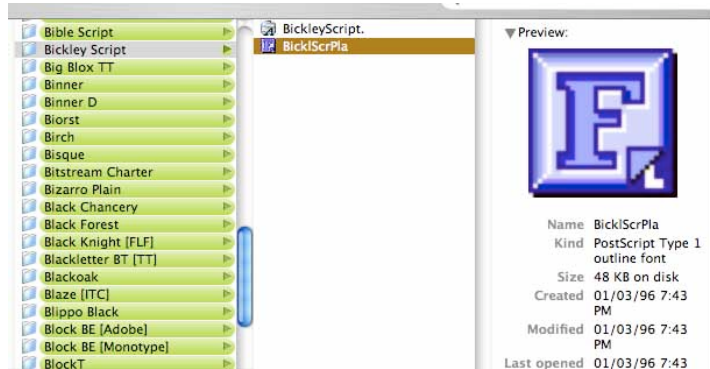
- * note the file extension is .TT but the file type is FFIL
- * this is another TrueType font that you may load on your own from a website or a type library
- * these are not meant to be used for print production—old TrueType fonts were only meant to be used on the Windows platform for screen use only. However, the Mac can load, read & use these fonts.
- * for print production you must find a postscript version of these fonts



10


Kinds of Fonts-PostScript

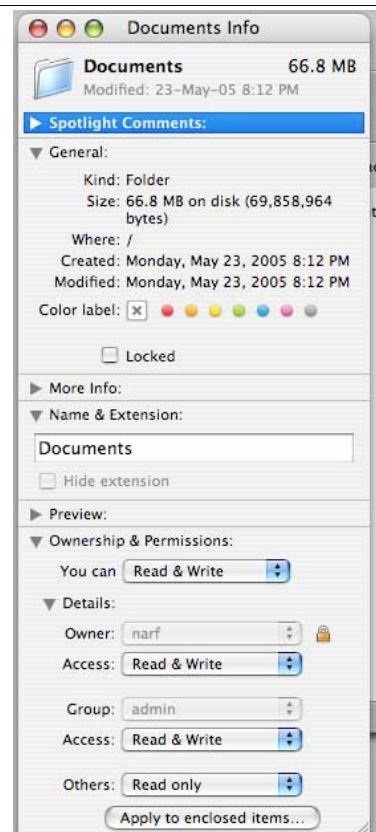
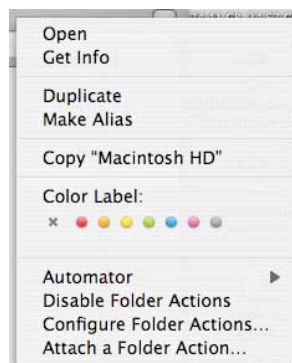
- * this is another PostScript Type 1, there are many different kinds of postscript fonts. Meaning different manufacturers of these kinds of fonts.
- * to get the information on the font kind just click on the file or use the "Get Info" function built into your Mac



11

Get Info function

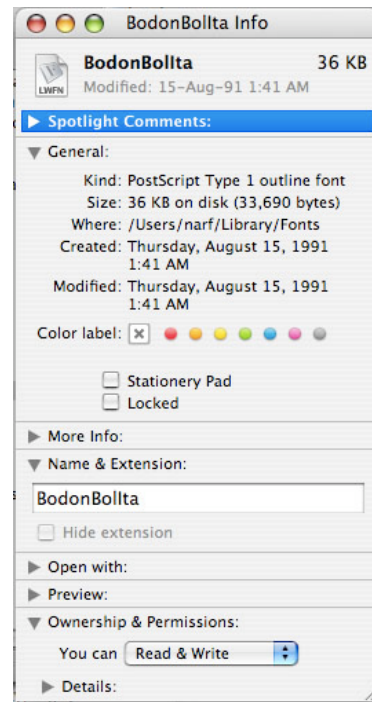
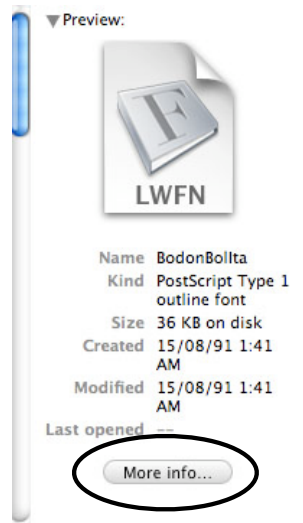
- * right click on a file or select a file and choose Get Info or use the  keys
- * this will bring up a file or document information window where you can see more detailed comments about any file on your Mac



12

Get Info function

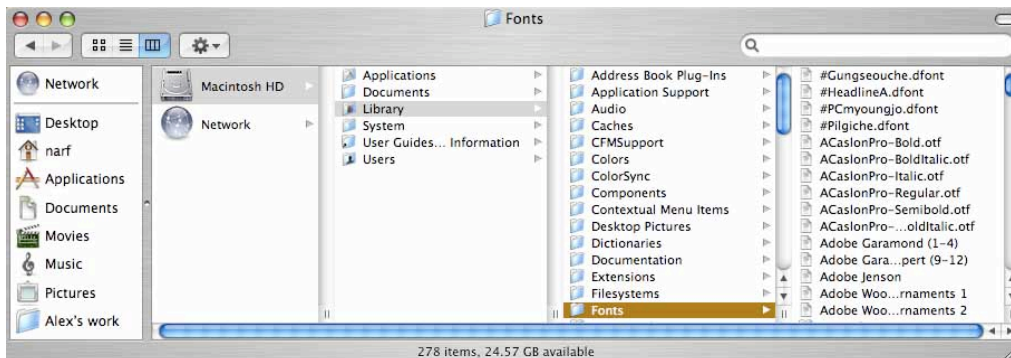
- * if you click on a font file in a master collection you will see the font name and basic info
- * below this you will see a button "more information"
- * click this and you will access Get Info for that file



13

Font Storage & Uses

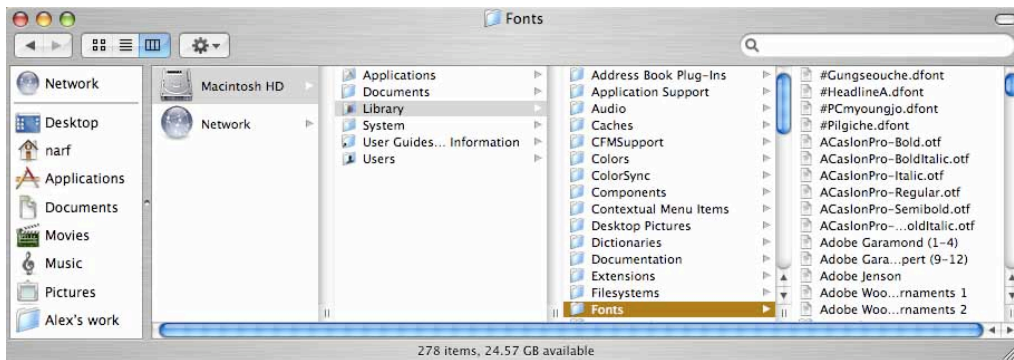
- * you have several levels where fonts are stored
- * one of the most important is the admin level—the top level
- * these fonts all come pre-loaded on your Mac
- * never move, delete or change the fonts in this folder—your OSX uses these to function



14

Font Storage & Uses

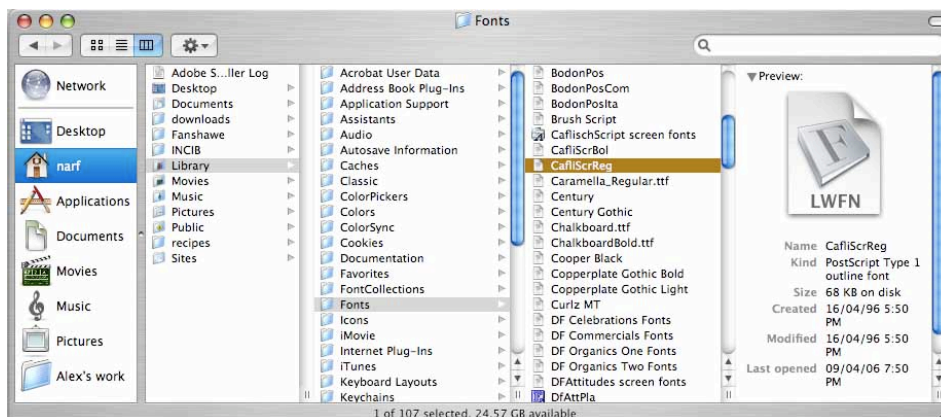
- * these are the fonts that come with your Mac
- * you should never delete or move these font files
- * the OS will first look here for a font then move on to toher level if it does not find the required font here
- * you should never load extra fonts into this level



15

Font Storage & Uses

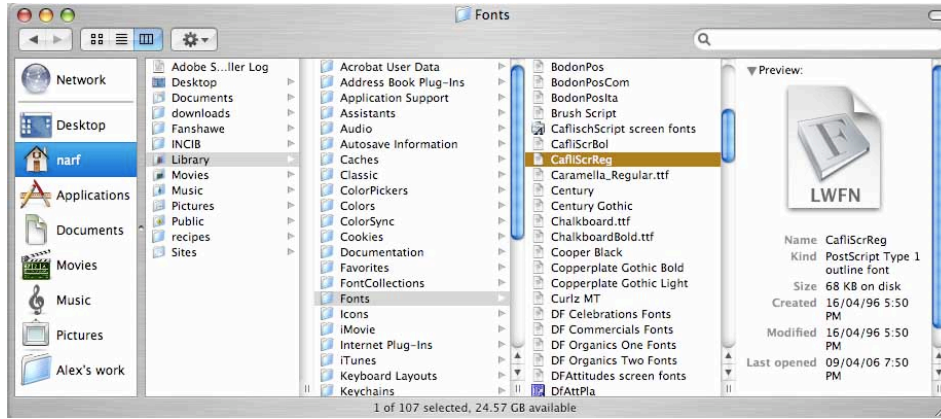
- * this is the next level of font storage, found on the user level
- * this is the best spot to store your extra fonts that you use to design
- * this is the second spot the OS will look for fonts it detects in files



16

Font Storage & Uses

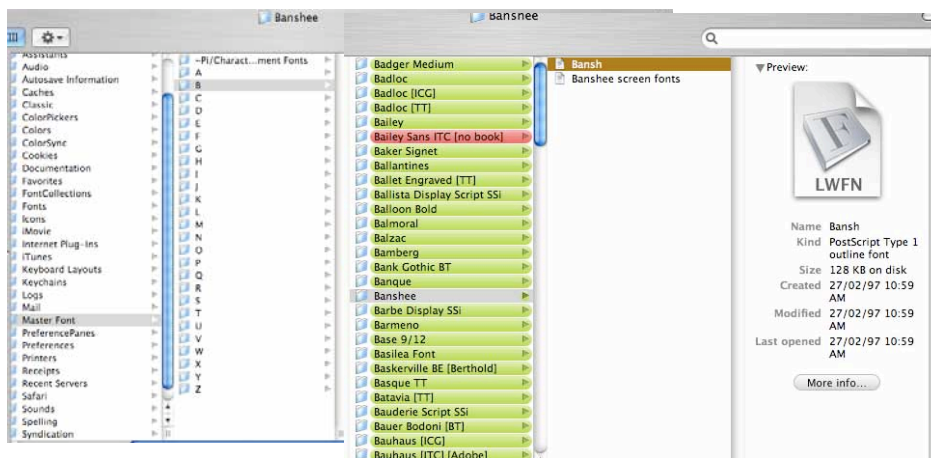
- * note how here you see all the font files in the fonts folder are individual font files
- * the OS will not look inside folders to detect a font file, so any fonts inside a folder are considered closed and will not be loaded onto the system for the OS to detect



17

Font Storage & Uses

- * it is wise to load a general collection of fonts that you find you use frequently, then keep the vast library of great fonts in a separate folder to use only when needed for specific designs.
- * each font file averages 100-140kb so font become a RAM eater if you load all your fonts on startup.



18